

THIS DRAWING IS INDICATIVE AND REPRESENTS ONLY THE DESIGN INTENT, THE CONTRACTOR MUST PRODUCE FULLY CO-ORDINATED WORKING / INSTALLATION DRAWINGS AS REFERRED TO IN THE CONTRACT DOCUMENTATION

GENERAL

NOTES

- DO NOT SCALE FROM THIS DRAWING.
- DRAWING TO BE READ IN CONJUNCTION WITH SPECIFICATION, DOCUMENTATION, DRAWINGS & ALL RELEVANT BRITISH STANDARD DOCUMENTS.

DRAINAGE

- ALL DRAINAGE INSTALLATIONS TO BE TO THE SATISFACTION OF THE LOCAL DRAINAGE AUTHORITIES & COMPLY FULLY WITH BS EN 12056-1.
- ALL FITTINGS, PLANT & EQUIPMENT TO BE INSTALLED, REGULATED & TESTED IN ACCORDANCE WITH THE MANUFACTURERS PRINTED INSTRUCTIONS.

WATER

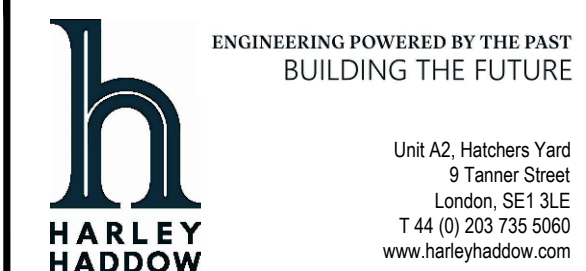
- ALL INSTALLATIONS TO COMPLY FULLY WITH CURRENT WATER BYELAWS, REQUIREMENTS OF BS 6700, BS-EN-806 AND LOCAL WATER AUTHORITIES.
- ALL FITTINGS, PLANT AND EQUIPMENT TO BE INSTALLED, REGULATED AND TESTED IN ACCORDANCE WITH THE MANUFACTURERS PRINTED INSTRUCTIONS.
- ALL PIPEWORK, FITTINGS AND EQUIPMENT TO BE INSTALLED TO PROVIDE SYSTEMS FREE OF AIR LOCKS, WATER HAMMER OR LEAKS.
- DRAIN VALVES TO BE PROVIDED AT ALL LOW POINTS IN ALL SYSTEMS.
- ALL PIPEWORK IN CEILING VOID DUCTS AND ENCLOSURES TO BE FULLY INSULATED, PIPEWORK WITHIN FLOOR VOIDS TO HAVE ARMOURFLEX INSULATION DUE TO SPACE RESTRICTIONS.
- ALL EXTERNAL PIPEWORK EXPOSED TO BE TRACED HEATED, INSULATED AND PROTECTED TO SUIT EXTERNAL CONDITIONS.
- THE PLUMBING CONTRACTOR SHALL BE RESPONSIBLE FOR CO-ORDINATION OF THEIR WORKS WITH ALL OTHER TRADES.
- THE PLUMBING CONTRACTOR SHALL ALLOW FOR ALL THE BUILDERS WORK IN CONNECTION WITH THE INSTALLATION OF THE WATER SERVICES.
- ALL HOT WATER OUTLETS WITH THE EXCEPTION OF CLEANERS SINKS SHALL HAVE TMV'S FITTED.

VENTILATION NOTES

- ALL DUCTWORK TO BE MANUFACTURED & INSTALLED TO DW/144 SPECIFICATION FOR SHEET METAL DUCTWORK OR DW154 FOR PLASTIC DUCTWORK.
- ALL BRANCHES TO INCORPORATE MULTI-BLADE TYPE VOLUME CONTROL DAMPERS.
- REFER TO MECHANICAL SCHEDULES FOR EQUIPMENT DETAILS.
- ALL GRILLE LENGTHS AND WIDTHS TO BE CHECKED AGAINST SITE MEASUREMENTS PRIOR TO ORDERING. THE CONTRACTOR SHOULD MAKE ALLOWANCES FOR SITE SIZED BLANK FILLER PIECES TO BE INSTALLED BETWEEN EACH GRILLE AND AT THE START AND END OF EACH RUN TO ENSURE NO SECTION OF THE COPPER DUCT IS LEFT OPEN TO THE SPACE. THE FINISH OF THE FILLER PIECES SHOULD MATCH THE GRILLE FINISH.
- ALL DUCTS PASSING THROUGH CAVITY BARRIERS TO INCORPORATE FIRE DAMPER WITH ACCESS DOOR ON BOTH SIDES OF BARRIER.
- ALL EQUIPMENT, DUCTWORK, GRILLES & PLENUM BOXES TO BE INDEPENDENTLY HUNG FROM STRUCTURE.
- FLEXIBLE DUCTWORK SHOULD NOT EXCEED 200mm IN LENGTH ON EACH GRILLE.
- ALL BENDS TO BE SWEEPED WHERE POSSIBLE, AND INCORPORATE TURNING VANES WHERE NOT.
- ALL SERVICES SHOULD BE LABELED TO BS 1710.
- ALL CONNECTIONS TO GRILLES TO BE AS PER MANUFACTURERS STANDARD CONNECTION. REFER TO SCHEDULES FOR DETAILS OF FINAL CONNECTION SIZES.

P04	DRAFT TENDER ISSUE	2A	JH	GWR	29.10
P03	STAGE 4B ISSUE	2A	JH	GWR	18.07
P02	STAGE 4A ISSUE	2A	JH	GWR	04.04
P01	STAGE 3 COORDINATION ISSUE	JH	JH	GWR	08.11
REV	DESCRIPTION	BY	CHK	APP	DATE

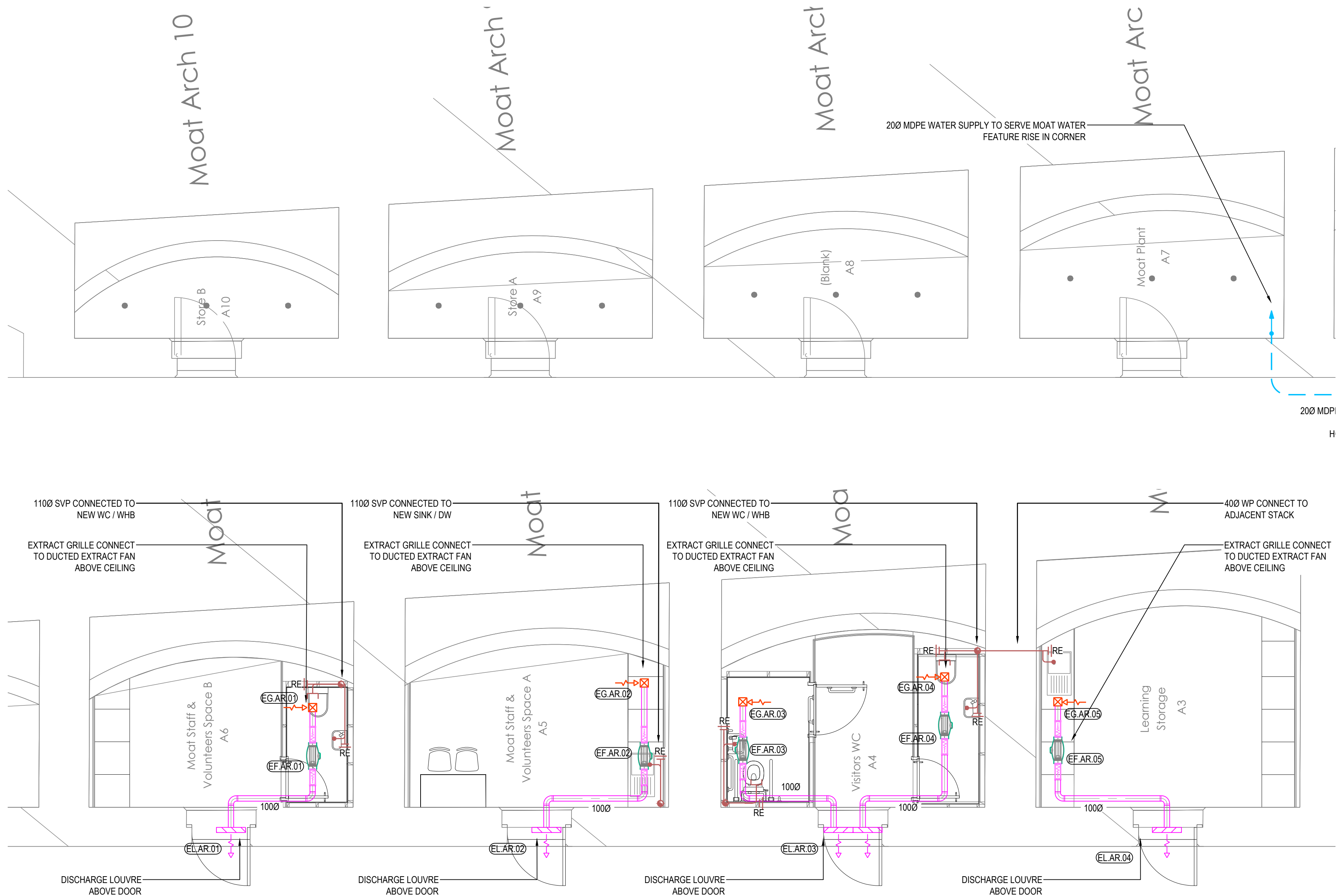
Project Status:
DRAFT TENDER ISSUE



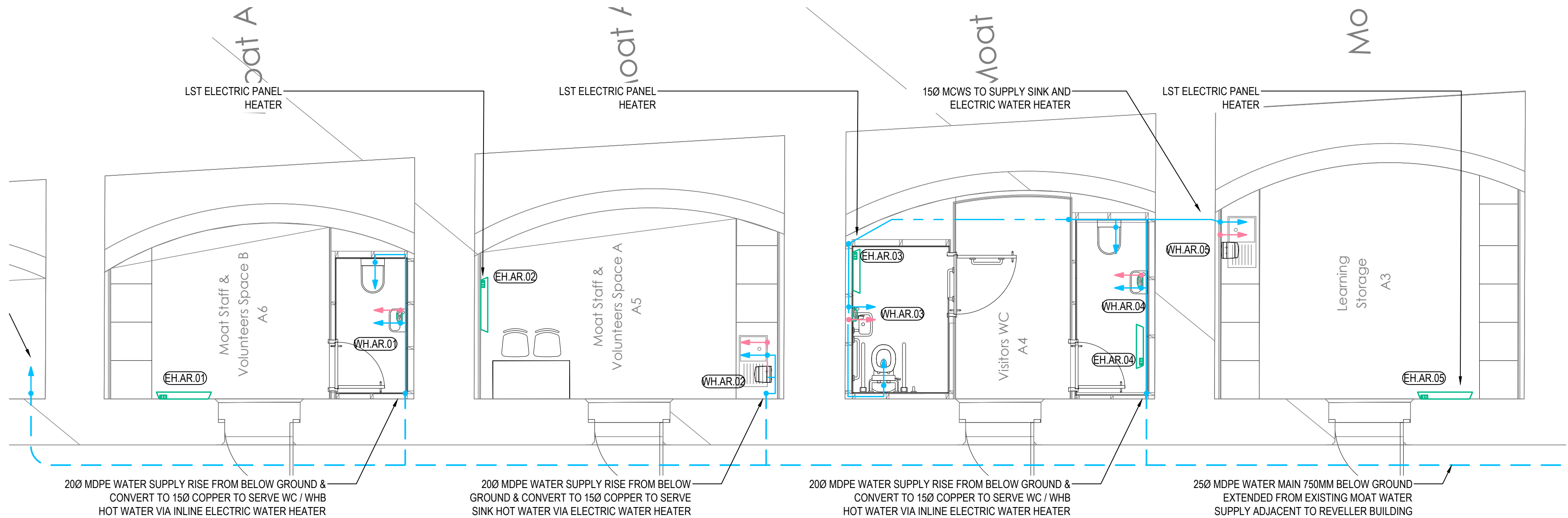
Project: 313293
**TOWER OF LONDON
REVELLER**

Drawing Title:
**THE ARCHES
MECHANICAL SERVICES**

Scale @ A1 1:50	Date JULY 2024	Engineer JH
Drawing No. 313293-HAH-01-XX-D-M-05051	Revision P04	



VENTILATION AND DRAINAGE LAYOUT



DOMESTIC WATER AND HEATING LAYOUT